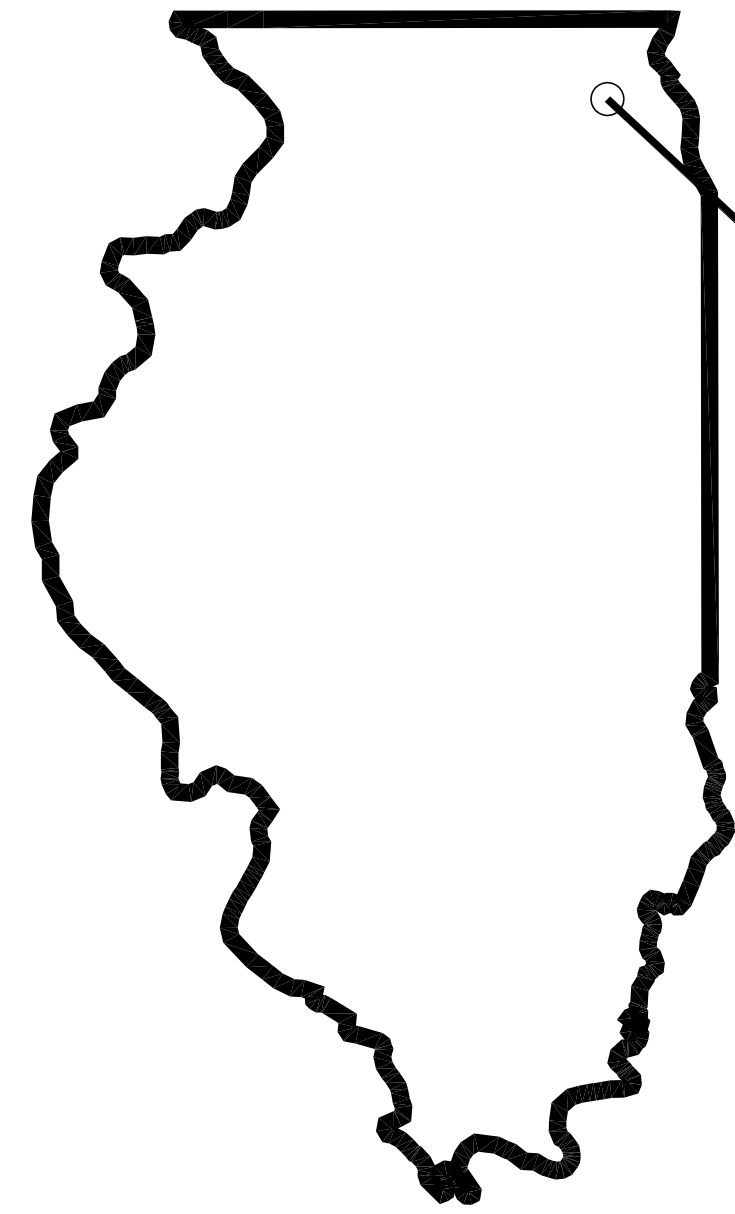


1215 Houbolt Road
Joliet, IL 60431-8938



SITE LOCATION PLAN



ELECTRICAL

- E-COV DRAWING LIST AND GENERAL NOTES
- E-C1 PARKING LOT S1, S2 AND S3 LAYOUT
- E-C2 PARKING LOT E1 AND E2 LAYOUT
- E-C3 DETAILS AND POWER INTERFACE PANEL
- E-C4 MAIN CAMPUS BUILDINGS CAMERA LOCATION DRAWING

ELECTRICAL – GENERAL NOTES:

1. ALL WORK SHALL CONFORM TO THE NATIONAL CODE, LATEST EDITION AND ANY STATE OR LOCAL CODES THAT MAY APPLY.
2. THE CONTRACTOR SHALL INSPECT THE SITE PRIOR TO BIDDING THE WORK. UNFAMILIARITY WITH SITE CONDITIONS SHALL NOT BE GROUNDS FOR COMPENSATION FOR ADDITIONAL SERVICES.

**PHASE V SECURITY CAMERA POWER
PARKING LOTS S1, S2, S3, E1 & E2
& BUILDING CAMERA INSTALLATION**

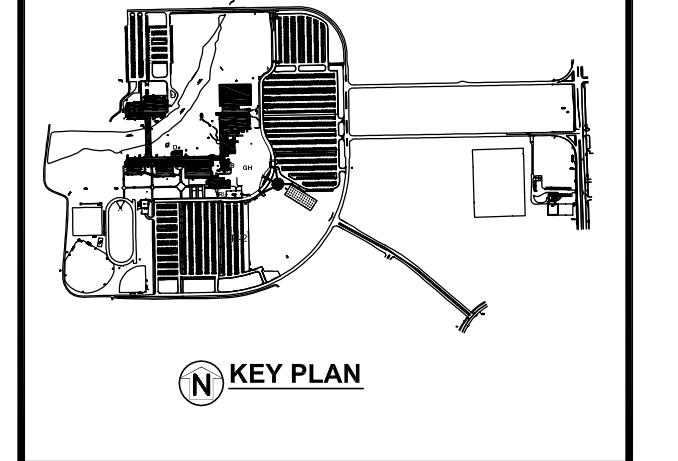
GENERAL NOTES



1215 HOUBOLT ROAD
Joliet, IL 60431-8938

NO.	DATE	DESCRIPTION	BY

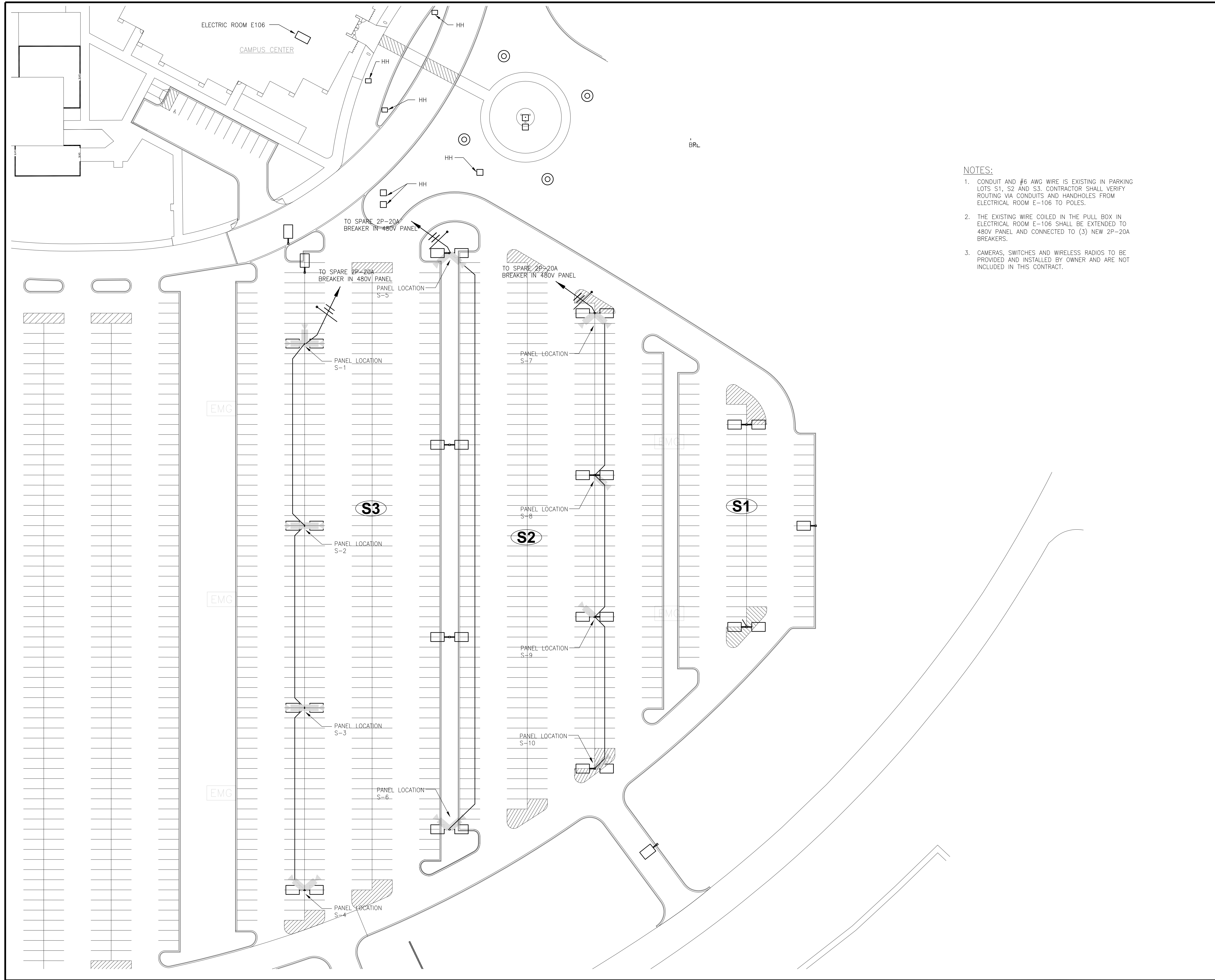
ISSUES / REVISIONS



PHASE V SECURITY CAMERA PROJECT

DRAWING INDEX AND GENERAL NOTES

DRAWN / DESIGNED BY DBS/LJH	JOB NO. 4118	SHEET NO.
CHECKED & APPROVED BY PER	SCALE AS NOTED	E-COV



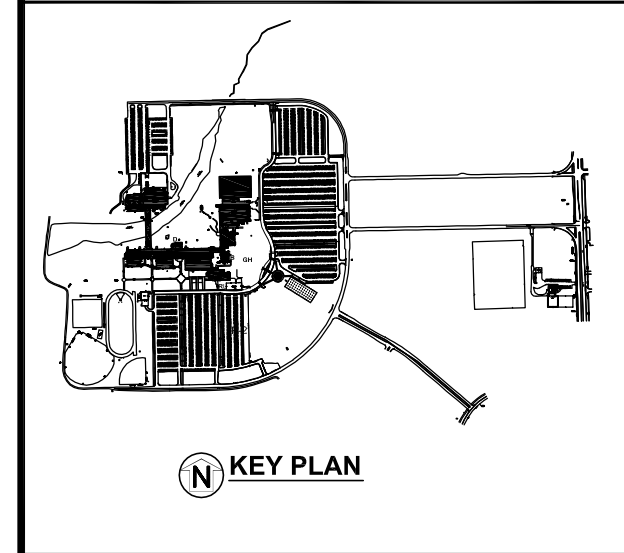
- NOTES:**
1. CONDUIT AND #6 AWG WIRE IS EXISTING IN PARKING LOTS S1, S2 AND S3. CONTRACTOR SHALL VERIFY ROUTING VIA CONDUITS AND HANDHOLES FROM ELECTRICAL ROOM E-106 TO POLES.
 2. THE EXISTING WIRE COILED IN THE PULL BOX IN ELECTRICAL ROOM E-106 SHALL BE EXTENDED TO 480V PANEL AND CONNECTED TO (3) NEW 2P-20A BREAKERS.
 3. CAMERAS, SWITCHES AND WIRELESS RADIOS TO BE PROVIDED AND INSTALLED BY OWNER AND ARE NOT INCLUDED IN THIS CONTRACT.

GENERAL NOTES



NO.	DATE	DESCRIPTION	BY
1	01/25/12	ISSUED FOR BID	TJH

ISSUES / REVISIONS



**PHASE V
 SECURITY CAMERA
 PROJECT**

PARKING LOT
 S1, S2 & S3 LAYOUT

DRAWN / DESIGNED BY DBS/LJH	JOB NO. 4118	SHEET NO. E-C1
CHECKED & APPROVED BY PER	SCALE AS NOTED	

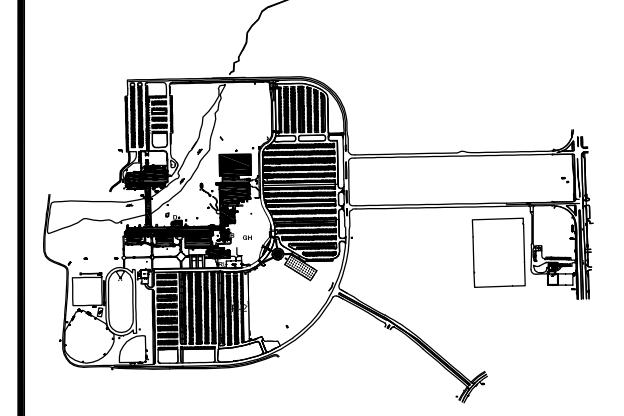
GENERAL NOTES



1215 HOUBOLT ROAD
 Joliet, IL 60431-8938

#	DATE	ISSUED FOR	BY
1	01/26/12	ISSUED FOR BID	HOH

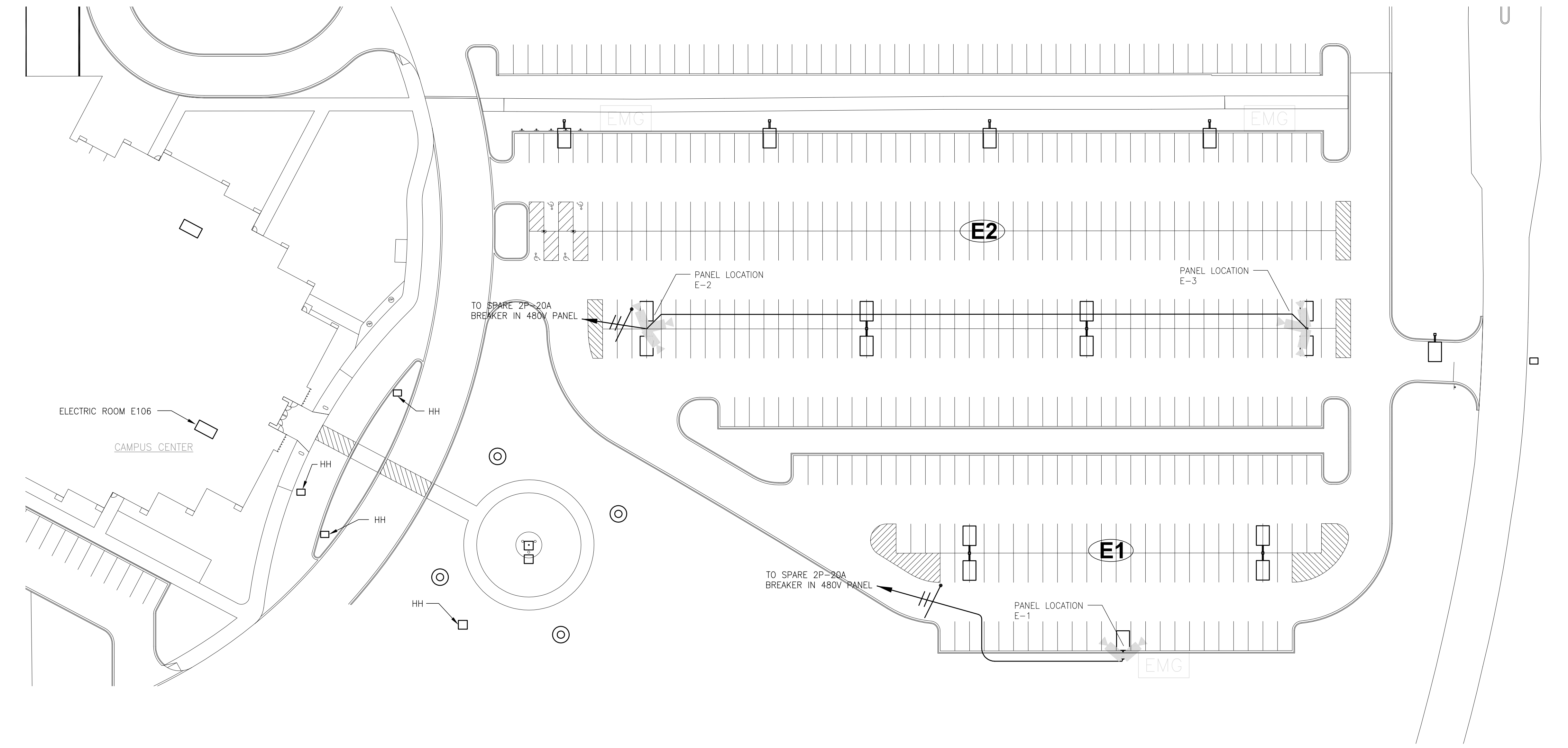
ISSUES / REVISIONS



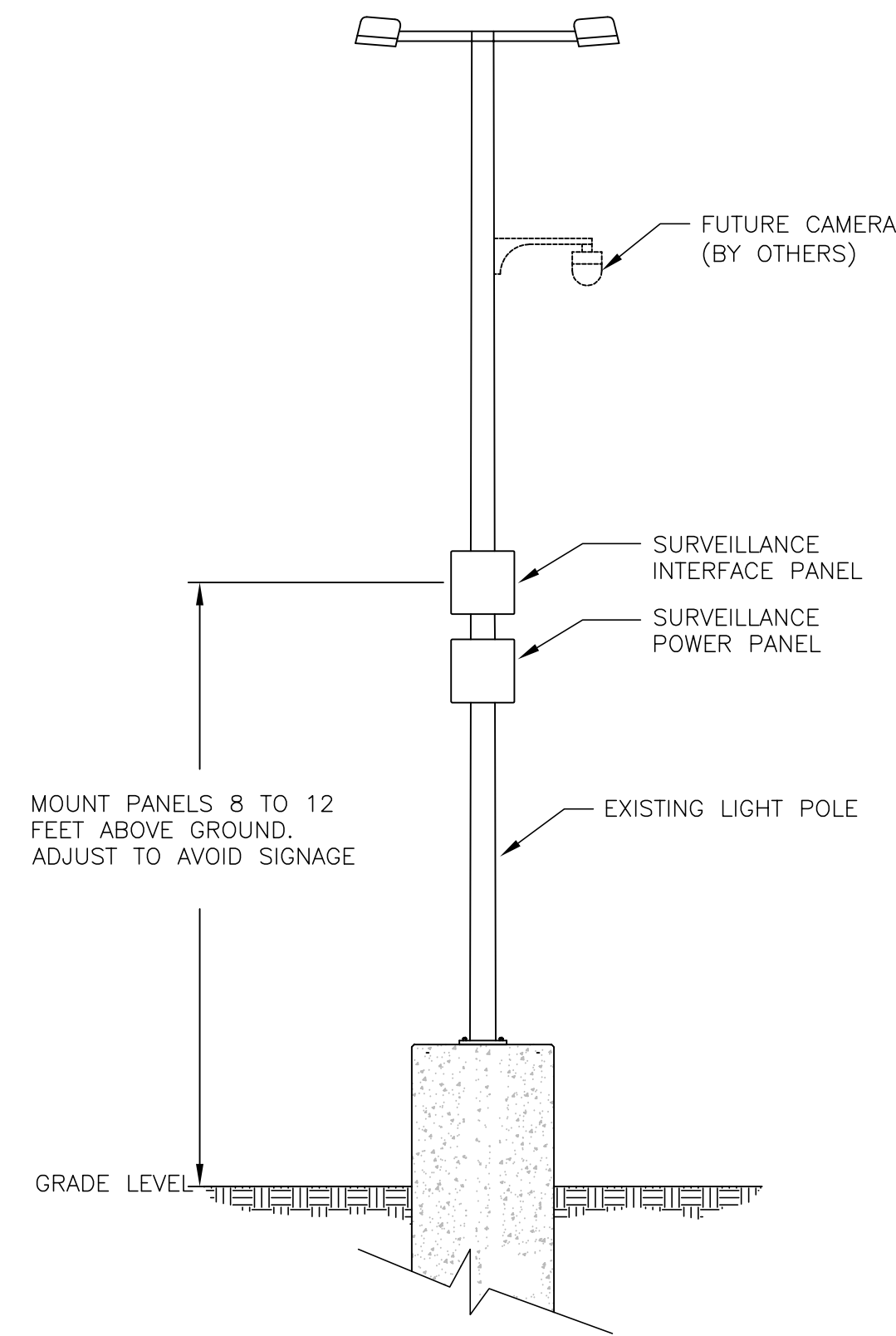
**PHASE V
 SECURITY CAMERA
 PROJECT**

PARKING LOT
 E1 & E2 LAYOUT

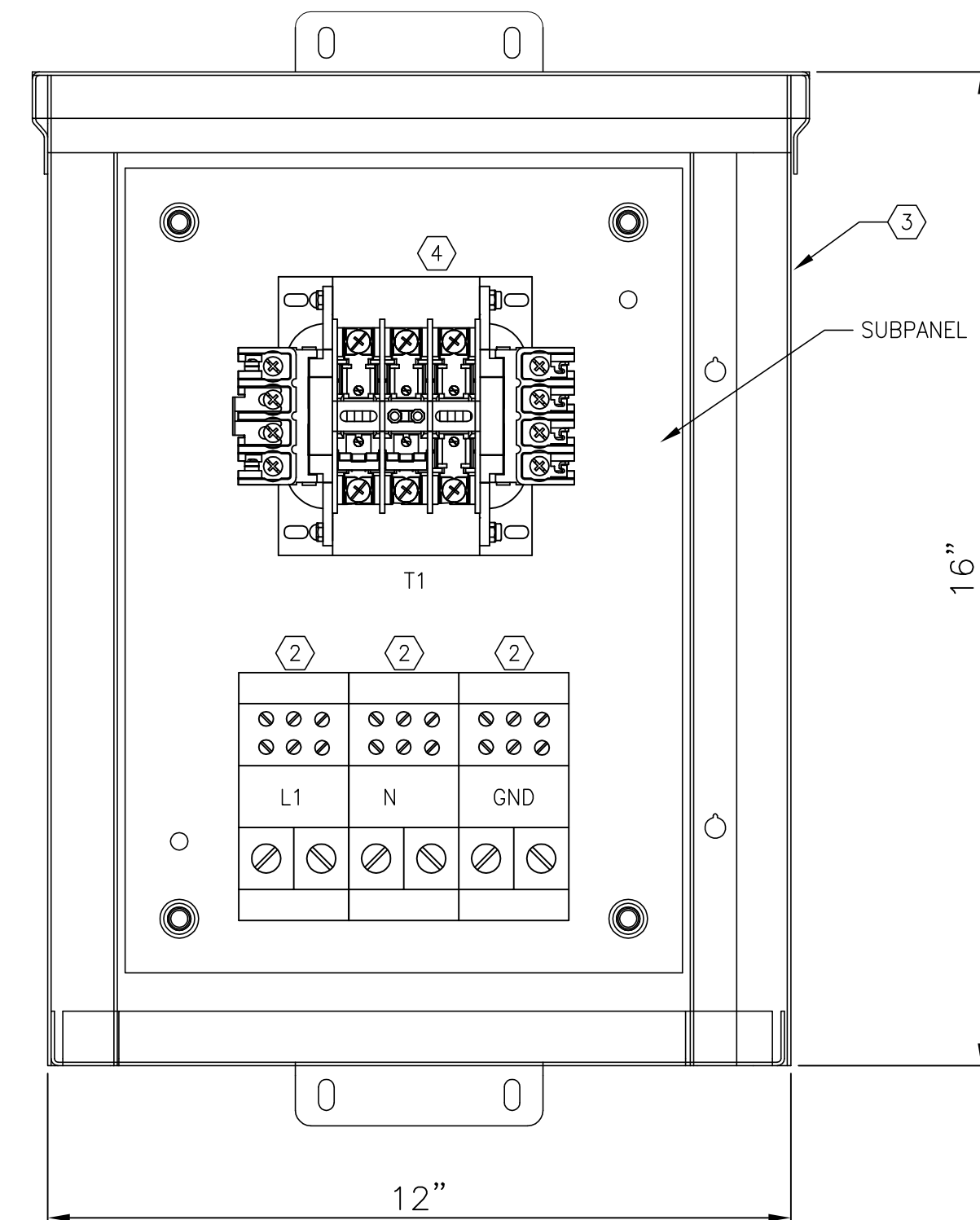
DRAWN / DESIGNED BY DBS/LJH	JOB NO. 4118	SHEET NO. E-C2
CHECKED & APPROVED BY RFR	SCALE AS NOTED	



- NOTES:**
1. CONDUIT ONLY IS EXISTING IN PARKING LOTS E1, AND E2. CONTRACTOR SHALL VERIFY ROUTING VIA CONDUITS AND HANDHOLES FROM ELECTRICAL ROOM E-106 TO POLES.
 2. THE CONTRACTOR SHALL SUPPLY AND INSTALL 3-#6 AWG WIRE IN THE EXISTING CONDUITS FROM ELECTRICAL ROOM E-106 TO POLES IN LOTS E1 AND E2.
 3. THE CONTRACTOR SHALL SUPPLY AND INSTALL (3) NEW 2P-20A BREAKERS IN THE 480V PANEL IN ELECTRICAL ROOM E-106.
 4. CAMERAS, SWITCHES AND WIRELESS RADIOS TO BE PROVIDED AND INSTALLED BY OWNER AND ARE NOT INCLUDED IN THIS CONTRACT.



TYPICAL POLE ARRANGEMENT
SCALE: N.T.S.

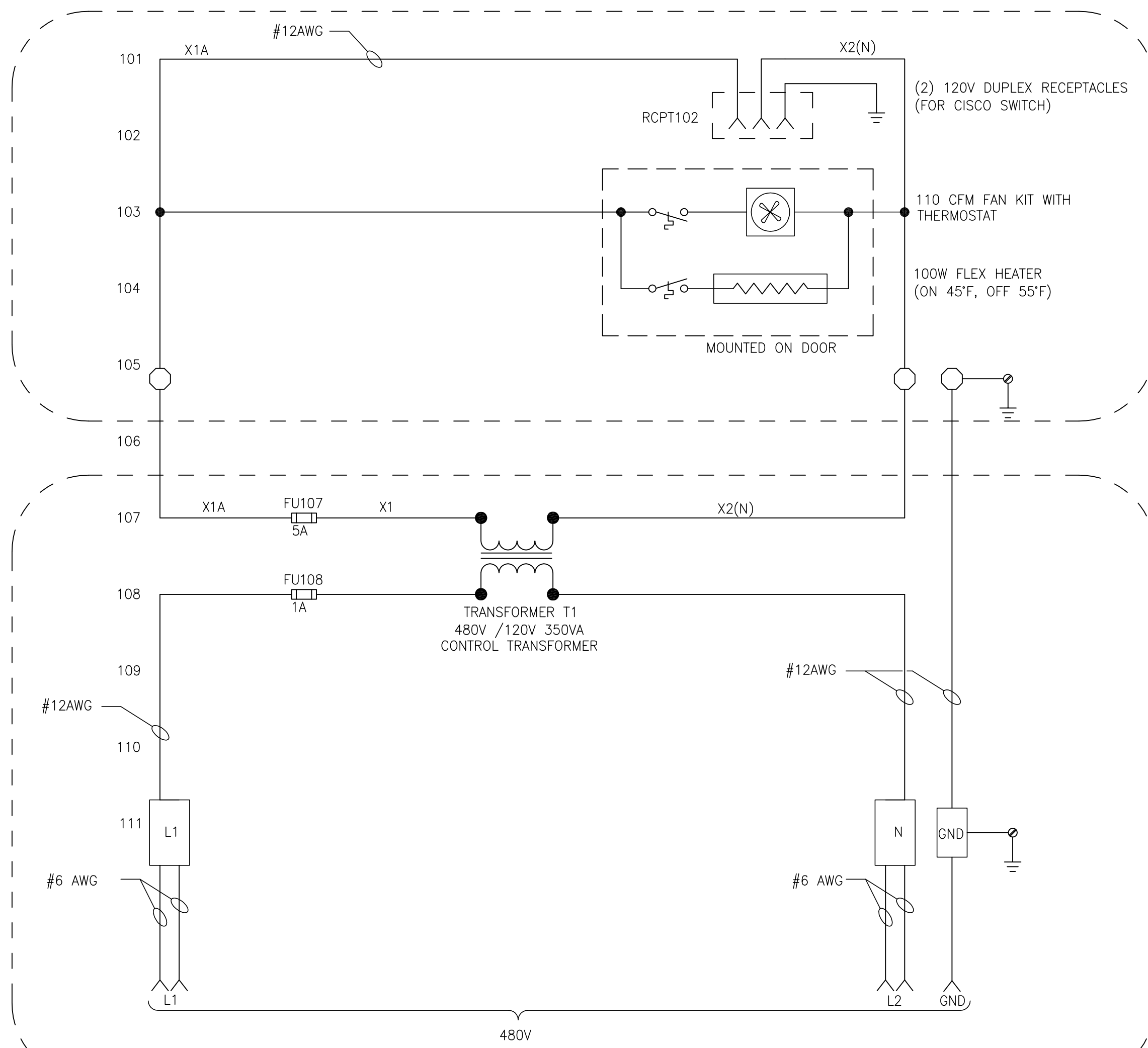


SURVEILLANCE POWER PANEL
SCALE: 1/2"=1"

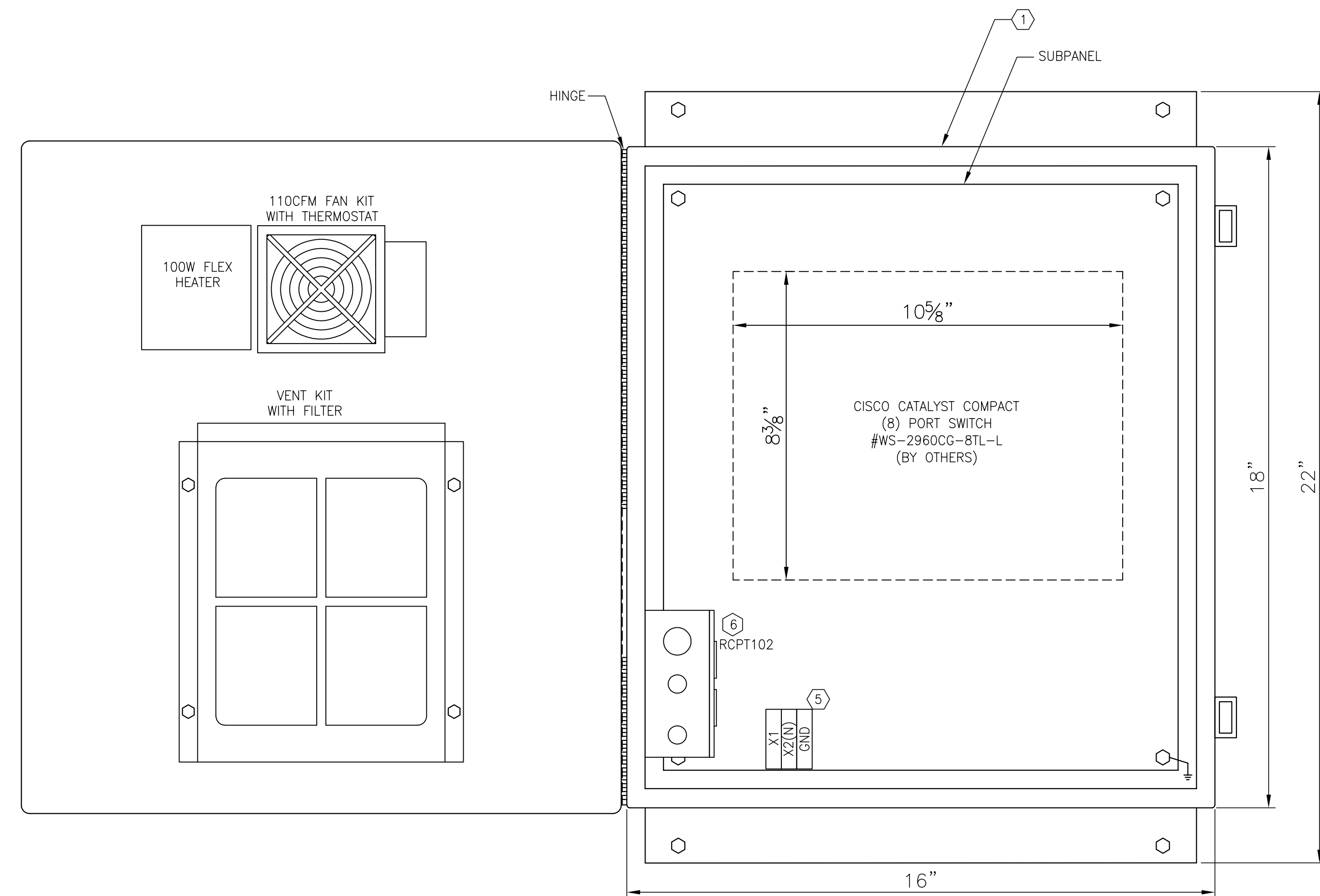
BILL OF MATERIAL			
MARK No.	QTY.	DESCRIPTION	REMARKS
①	1	OUTDOOR ENCLOSURE (BOX 18"x16"x8") DDB UNLIMITED CAT#OSVP-18168 WITH HEATER, FAN KIT AND VENT KIT	
②	2	SPLICER BLOCK MARATHON CAT# 1331555CH	
③	1	NEMA 3R 16X12X6 ENCLOSURE WITH SUBPANEL HOFFMAN #A16R126HCR	
④	1	TRANSFORMER 350VA 240/480V-120V SQ-D #9070TF350D1 OR APPROVED EQUAL	
⑤	1	TERMINAL BLOCK SQUARE D CLASS 9080 TYPE GR6	
⑥	1	(2) 120 V, 20A DUPLEX RECEPTACLE IN A 2-GANG BOX WITH COVER.	

WIRING NOTES:

- IN PARKING LOTS S1, S2 AND S3, CONDUIT AND #6 AWG WIRES ARE EXISTING. CONTRACTOR SHALL VERIFY ROUTING OF CONDUITS VIA HANDHOLES FROM ELECTRICAL ROOM E-106 TO CAMERA POLES AS SHOWN ON DWG. E-C1.
- IN PARKING LOTS E1 AND E2, CONDUIT ONLY IS EXISTING. CONTRACTOR SHALL VERIFY ROUTING AND PULL NEW #6 AWG THHN WIRE TO CAMERA POLES AS SHOWN ON DRAWING E-C2.
- EXISTING WIRES IN ELECTRICAL ROOM E106 ARE COILED IN THE ELECT ROOM PULL BOX. CONTRACTOR SHALL EXTEND WIRES TO 480V PANEL AND PROVIDE NEW 20A BREAKERS TO ACCOMMODATE THE NUMBER OF CIRCUITS REQUIRED PER THE ROUTING VERIFICATION.



SURVEILLANCE INTERFACE AND POWER PANEL WIRING



SURVEILLANCE INTERFACE PANEL
SCALE: 1/2"=1"

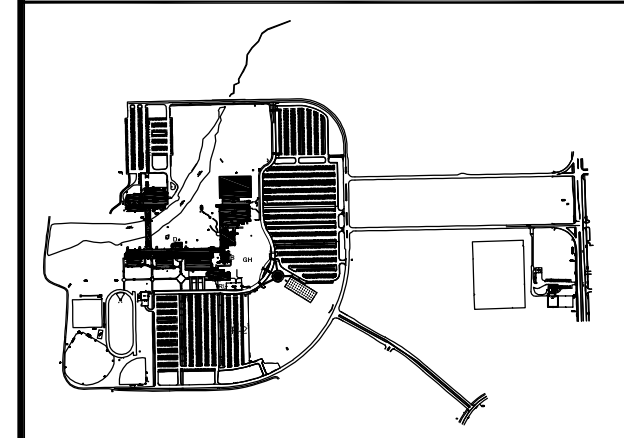
GENERAL NOTES



1215 HOUBOLT ROAD
Joliet, IL 60431-8938

NO.	DATE	DESCRIPTION	BY
1	11/28/12	ISSUED FOR BID	JCH

ISSUES / REVISIONS



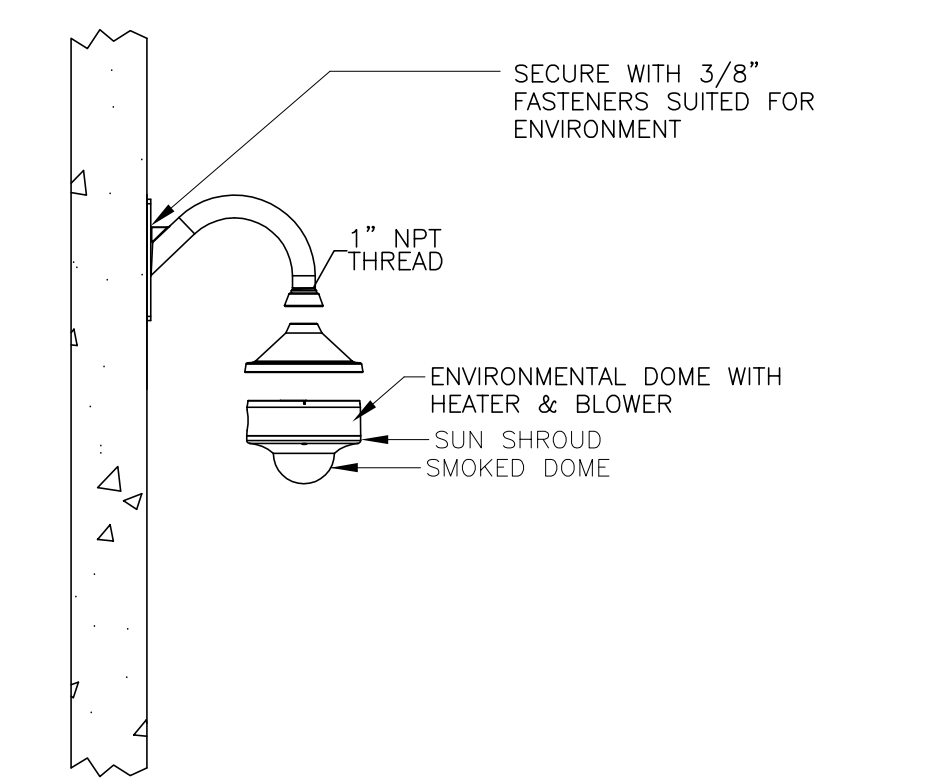
KEY PLAN

PHASE V
SECURITY CAMERA
PROJECT

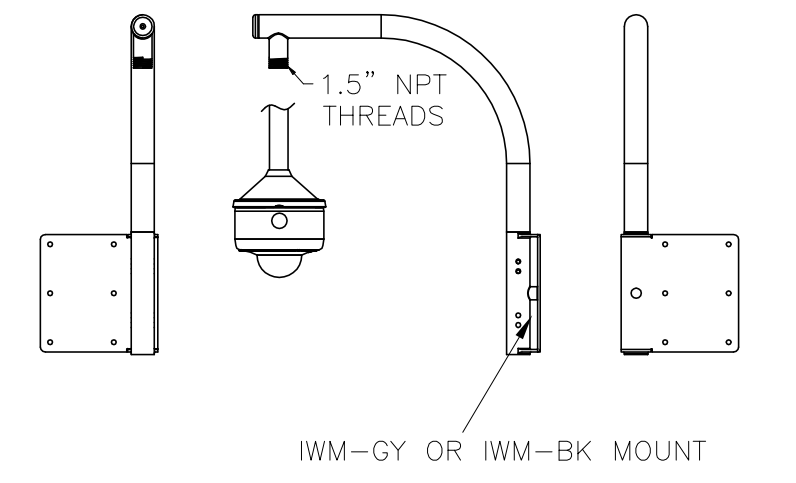
DETAILS AND CAMERA
INTERFACE PANEL



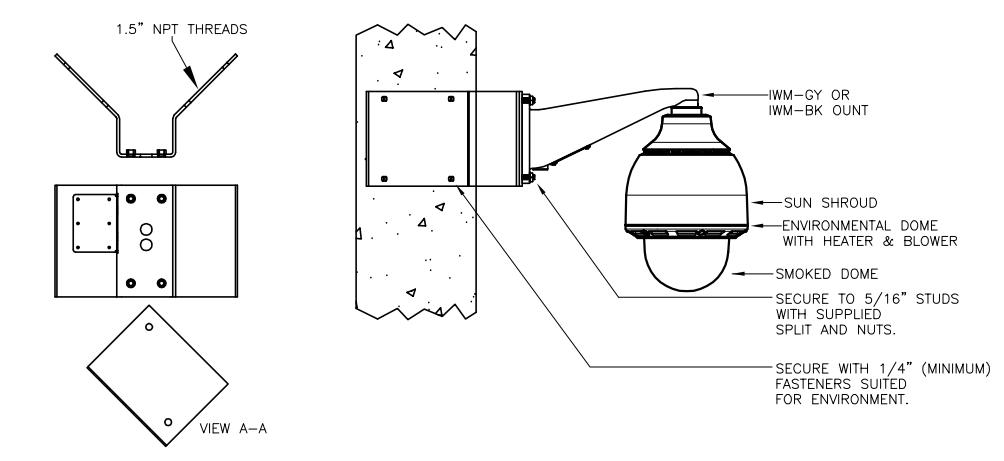
MAIN CAMPUS BUILDING CAMERA LOCATION PLAN
 Scale: 1" = 50'-0"



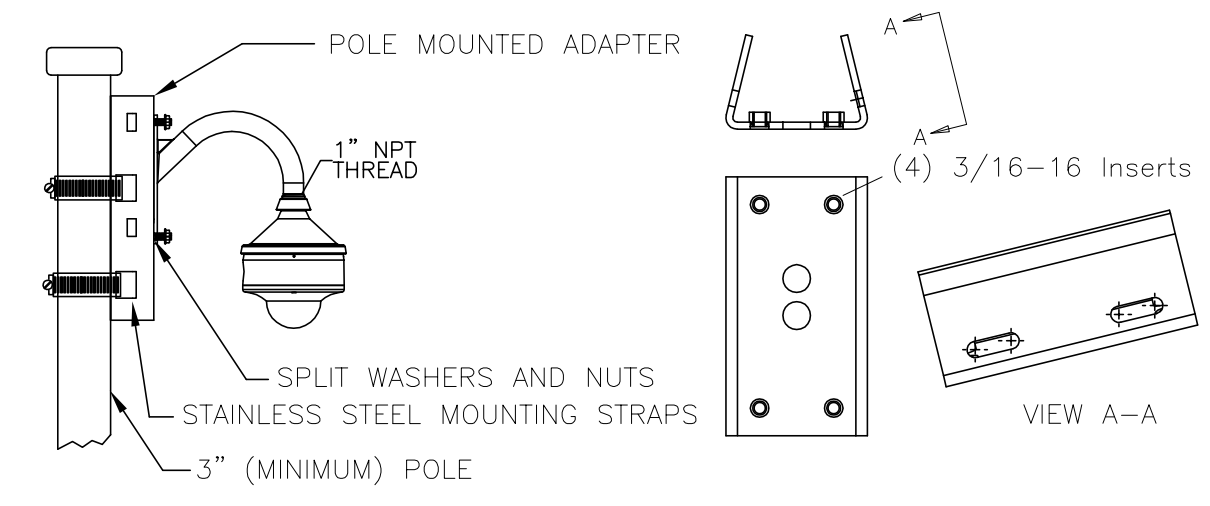
WALL MOUNT / GOOSENECK BRACKET DETAIL
 Scale: NTS



PARAPET BRACKET DETAIL
 Scale: NTS



CORNER MOUNTING DETAIL
 Scale: NTS



POLE MOUNTED DETAIL
 Scale: NTS

NOTES:

1. CONTRACTOR SHALL INTERCEPT 120V FROM NEAREST UNSWITCHED CIRCUIT FOR HEATER BLOWER FUNCTION (TYPICAL FOR ALL OUTDOOR CAMERAS).
2. ALL CABLES SHOWN ON THIS DRAWING SHALL BE CATEGORY 6 NETWORK CABLE.
3. THE CONTRACTOR SHALL ROUTE CABLE UTILIZING THE SHORTEST DISTANCE AVAILABLE. THE CONTRACTOR SHALL NOTIFY THE COLLEGE TECHNOLOGY DEPARTMENT IF CAT-6 RUNS APPROACH 330 FEET.
4. EXACT LOCATIONS OF THE CAMERAS AND POLES SHALL BE COORDINATED WITH THE EQUIPMENT VENDOR AND THE COLLEGE TO ASSURE COMPREHENSIVE VIDEO COVERAGE OF THE AREA.

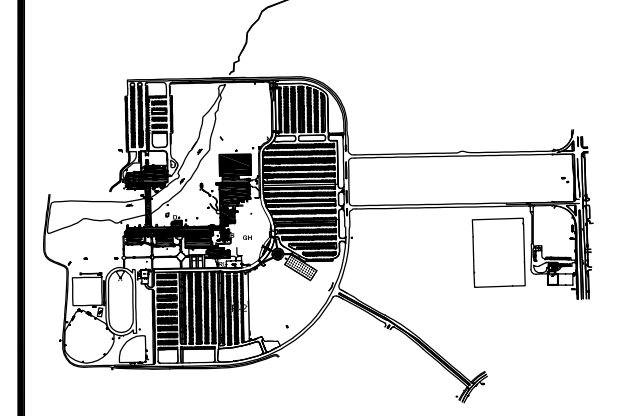
GENERAL NOTES



1215 HOUBOLT ROAD
 Joliet, IL 60431-8938

NO.	DATE	DESCRIPTION	BY
1	01/25/23	ISSUED FOR BID	JCH

ISSUES / REVISIONS



PHASE V SECURITY CAMERA PROJECT

MAIN CAMPUS BUILDING CAMERA LOCATION PLAN

DRAWN / DESIGNED BY DBS/LJH	JOB NO. 4118	SHEET NO. E-C4
CHECKED & APPROVED BY PER	SCALE AS NOTED	